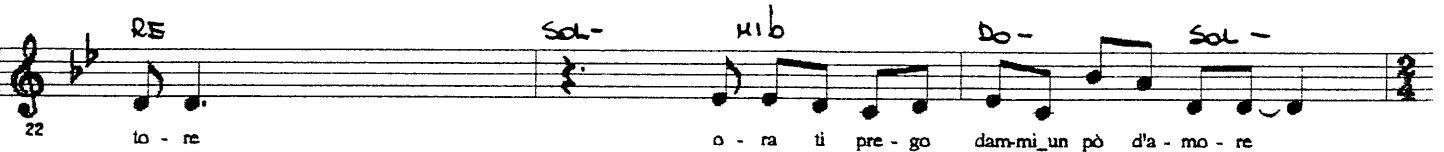
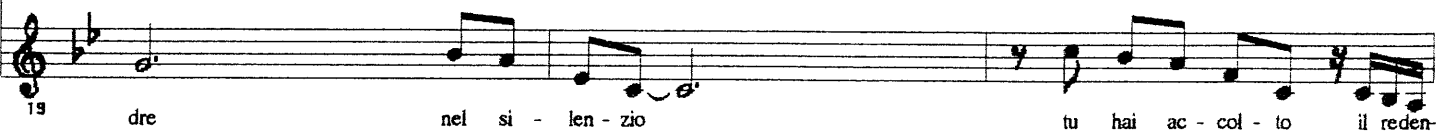
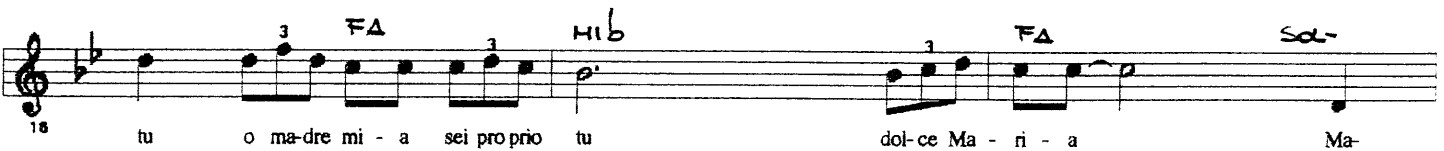
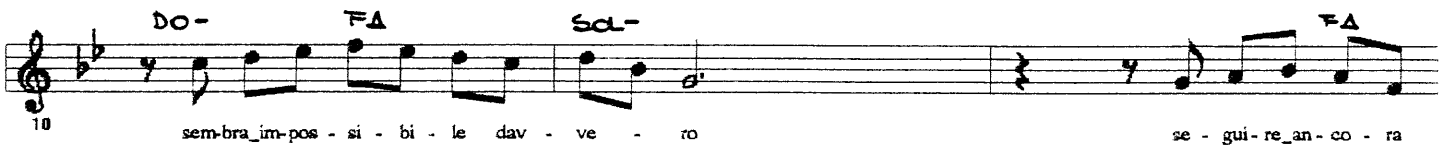
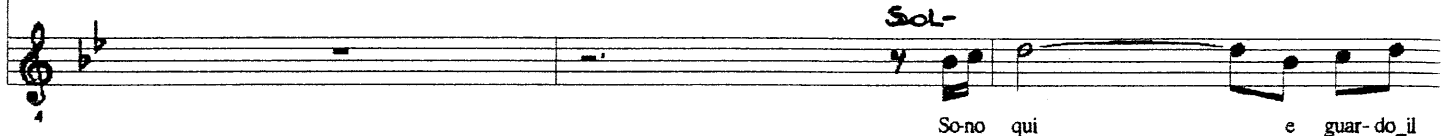
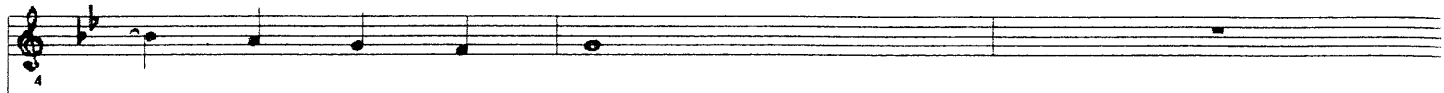


Canzone per Maria



25 *sib*
Ma - ri - a fi - glia del

28 *FA* *Sol-*
so - le bian - ca fi - glia

31 *FA* *Sol-*
d'I - ara - e - le

34 *mi b* *FA* *mi b* *RE-*
vie - ni_e ri - ma - ni an - co - ra qui

37 *Do -* *Sol-*
in mez - zo_a noi.